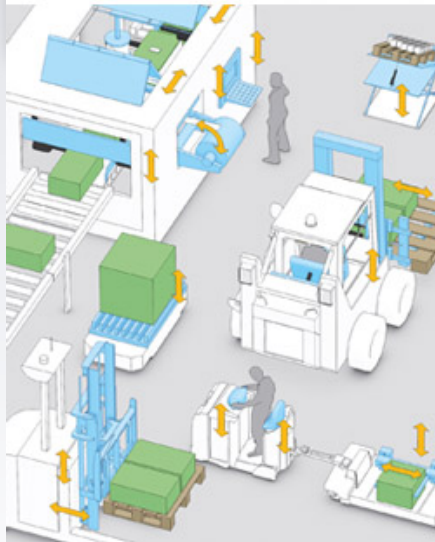
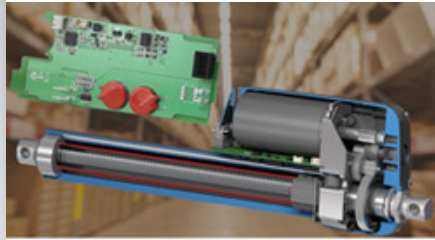


Linear  
MOTIONEERING  
ToolsMicron  
MOTIONEERINGProduct  
SelectorsInteractive  
3D ModelsPrecision  
Ball SelectorMotioneering  
Toolbar

## Thomson smart actuators enable design connectivity and flexibility in industrial machines



A recent *Design, Products & Applications* article details how the new generation of Thomson smart linear actuators can help with more complex automation schemes and a more compact system footprint, which simplifies operation and lowers cost of ownership.

Key among the benefits is the integration of electronics into the actuator's housing, including:

- Low-level power switching.
- Position feedback / end-of-stroke indication.
- Simplified control architectures with bus operation.
- Monitoring and diagnostics.
- Remote access and communication protocols.
- Synchronisation.

Learn more about these features and the benefits of integrated onboard electronics.

[Smart Actuation Website >](#)[Read the article >](#)[+ education/events](#)

### Tech Tips Video:

#### Benefits of Thomson WM ball-guided, ball screw-driven linear units

WM linear motion units come with a unique internal movable ball screw support and are designed for high thrust, payload, precision and stiffness. Other benefits include:

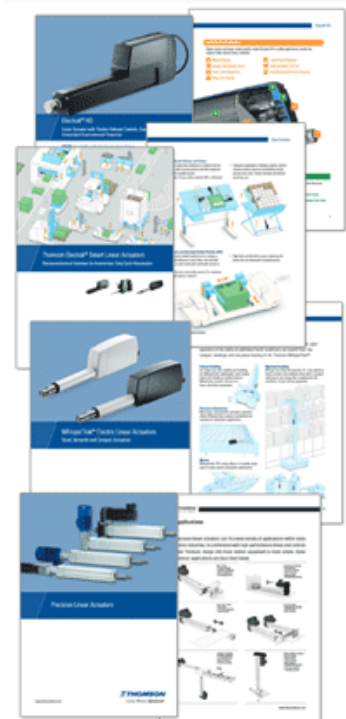
- Thrust force up to 12000 N.
- 11 m stroke length combined with input speeds of 3000 rpm.
- Repeatability to 0.01 mm.



This makes the WM linear units the ideal choice for applications such as machine tool automation or test and measurement.

[Watch the Tech Tips video >](#)

## + news



### Thomson Publishes European Editions Of New And Updated Literature

We would like to inform you about new and updated Thomson literature available in EU:

Available as online PDF:

- **Updated Electrak HD Linear Actuator Brochure**  
[English](#) and [German](#).
- **New Smart Linear Actuators Brochure**  
[Italian](#).
- **Updated Precision Linear Actuators Catalogue**  
[English](#) and [German](#).

Available printed and online:

- **New Smart Linear Actuators Brochure**  
[English](#) and [German](#).
- **Updated WhisperTrak Actuators Brochure**  
[English](#) and [German](#).

[Order your free literature samples >](#)

Share via Social Media:



Share via e-mail:



**Publisher: Thomson Industries, Inc.**

[sales.europe@thomsonlinear.com](mailto:sales.europe@thomsonlinear.com)

**THOMSON NEFF GmbH**

Nürtinger Str. 70 | 72649 Wolfschlugen | Germany

Phone +49 7022 504 0 | Fax +49 7022 504 405

[sales.germany@thomsonlinear.com](mailto:sales.germany@thomsonlinear.com)

[www.thomsonlinear.com](http://www.thomsonlinear.com)

**THOMSON Tollo Linear AB**

Estridsväg 10 | 29165 Kristianstad | Sweden

Phone +46 44 246700 | Fax +46 44 244085

[sales.scandinavia@thomsonlinear.com](mailto:sales.scandinavia@thomsonlinear.com)

Register Office: Local Court Stuttgart, HRB 220154

Managing Directors: Wolfgang Becker, Sanjay Chowbey